



# INSTALLATION GUIDE

**2006-2015 MAZDA MIATA NC PERFORMANCE  
ALUMINUM RADIATOR | SKU: MMRAD-MIA-06**

## TABLE OF CONTENTS

**Pg 1** RESOURCES & CONTACT INFORMATION

**Pg 2** PARTS BREAKDOWN

**Pg 2** IMPORTANT SAFETY INFORMATION

TOOLS NEEDED

INSTALLATION TIME

INSTALLATION DIFFICULTY

INSTALLATION INSTRUCTIONS

**Pg 4** DISPOSAL INSTRUCTIONS

WARRANTY INFORMATION

## RESOURCES & CONTACT



**CALL 1-877-GOMISHI**

CUSTOMER SERVICE HOURS: MON-FRI 8:30AM-5:00PM EST



**MISHIMOTO**



**GOMISHIMOTO**



**MISHIMOTO**



**WEBSITE**

[WWW.MISHIMOTO.COM](http://WWW.MISHIMOTO.COM)



**ENGINEERING BLOG**

[WWW.MISHIMOTO.COM/ENGINEERING](http://WWW.MISHIMOTO.COM/ENGINEERING)

## PARTS BREAKDOWN

DESCRIPTION	QUANTITY
RADIATOR	1
M6 BOLTS, 10MM THREAD LENGTH	2
M6 BOLTS, 16MM THREAD LENGTH	2
M4 ALLEN BOLTS	2

## IMPORTANT SAFETY INFORMATION

- › Mishimoto recommends you use safety glasses and protective gloves during the install of their products
- › Raise vehicle only on jack stands or on a vehicle lift
- › Allow vehicle to cool completely prior to attempting installation
- › Do not run the engine or drive the vehicle while overheating; serious damage can occur
- › Please dispose of any liquids properly
- › Mishimoto is not responsible for any vehicle damage or personal injury due to installation errors, misuse, or removal of Mishimoto products
- › If you need any assistance while installing our products, reach out to our Customer Service Team at 1-877-GOMISHI

## TOOLS NEEDED

8MM SOCKET	PHILIPS HEAD SCREWDRIVER
10MM SOCKET	2.5MM ALLEN WRENCH
12MM SOCKET	PANEL TOOL
¼" RATCHET AND EXTENSION	PICK TOOL
10MM WRENCH	DRAIN PAN
FLAT HEAD SCREWDRIVER	

**INSTALLATION TIME 4 HOURS**

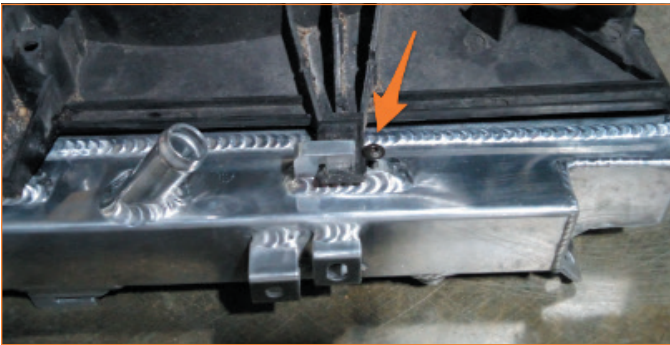
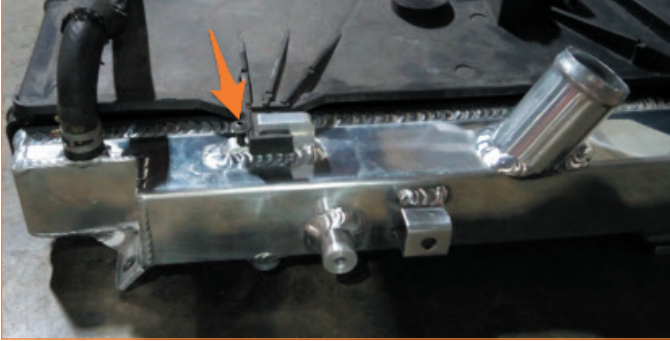
**INSTALLATION DIFFICULTY** 

## INSTALLATION INSTRUCTIONS

**!!!** Read all important safety information prior to installing our products.

- 01.** Remove the lower splash shield.
- 02.** Drain the engine coolant.
- 03.** Remove the battery, battery tray, and battery duct.
- 04.** Remove the air intake box.
- 05.** Remove the coolant expansion tank.
- 06.** Disconnect the cooling fan electrical connector.
- 07.** Remove the PCM duct.
- 08.** Disconnect the upper and lower radiator hoses from the radiator.
- 09.** Disconnect the coolant expansion tank hose from the radiator.
- 10.** Unbolt the power steering cooler from the radiator.
- 11.** Unbolt the AC condenser from the radiator.
- 12.** Remove the upper radiator brackets.
- 13.** Remove the lower radiator brackets.
- 14.** Remove the radiator and fan shroud assembly from the vehicle.
- 15.** Transfer the upper and lower radiator bushings to the Mishimoto radiator.
- 16.** Transfer the coolant overflow hose and fan shroud to the Mishimoto radiator.

CONTINUED ON FOLLOWING PAGE



17. Thread the provided M4 Allen bolts into the upper fan shroud mounts and snug them down. Do not over tighten them.



18. Install the Mishimoto radiator in the reverse order of removal using the provided hardware. See above images for hardware locations.

19. Refill coolant and bleed the system.

**Congratulations! You have finished your installation.**

***\*For Care & Maintenance, Disposal Instructions, and Warranty Information continue to the following page.***

## DISPOSAL INSTRUCTIONS

- › Do not dispose of any product as unsorted municipal waste. Use separate collection facilities. Contact your local authority for information regarding the collection systems available.
- › Never improperly dispose of any coolant, oil, or other chemicals.

## WARRANTY INFORMATION



- › All claims must be accompanied with a picture of the Mishimoto product showing the issue for which the claim is being submitted.
- › Mishimoto asks that the customer inspect their purchased item for any damage immediately upon arrival.
- › Any product deemed dead on arrival (DOA) must be claimed within 14 business days of delivery. Claims outside of this time frame will not be covered under the Mishimoto Lifetime Warranty.
- › This warranty does not include payment and/or reimbursement of the cost of labor in connection with the removal of any product returned pursuant to the warranty policy or in connection with the installation of any replacement items provided under the warranty policy.
- › Mishimoto has the right to refuse a claim at any time.
- › When Mishimoto accepts a claim, Mishimoto retains full discretion to choose if it will: (i) repair or replace purchaser's original Mishimoto product; (ii) replace purchaser's original Mishimoto product with the most current available model; or (iii) provide the purchaser with a gift card redeemable on [Mishimoto.com](http://Mishimoto.com) in the amount of the original purchase price of the original Mishimoto product. The provision of a replacement of a Mishimoto product is subject to availability and Mishimoto retains the right to substitute any warranty claim item with a comparable item or credit at any time.

- › If Mishimoto determines that it will provide a replacement item in connection with a claim under this warranty policy, and such item is out of stock, Mishimoto will place the customer on backorder and ship the replacement product to the purchaser once it becomes available.
- › Mishimoto is not liable for incorrect shipments in connection with a claim if a claim form is completed incorrectly, or if a model number is not included in a claim.
- › If you have a vehicle equipped with an automatic transmission, please make sure to specify this within the text box on the claim form. Mishimoto is not responsible for incorrect replacement shipments if transmission type is not indicated.



**WARNING**  
Cancer and  
Reproductive Harm  
[www.P65Warnings.ca.gov](http://www.P65Warnings.ca.gov)

This product can expose you to chemicals which are known to the state of California to cause cancer. For more information visit: [www.p65warnings.ca.gov](http://www.p65warnings.ca.gov)